

123-0125
Work Order 1368



It's like having your own shop!

Drawn By: Chris Davis

Last Modified: December 12, 2024

123-0125

Work Order 1368

Wood: Painted Maple

Color: White Lacquer

Cherry on Maple Desktop

Size: Queen

Hardware: 16" Nickel Bar Pulls on the face
6" Nickel Bar Pulls everywhere else

Additional Revisions:

<u>Date</u>	<u>Revision</u>
11/29/24	Updated wood and color Maple/White
12/6/24	Removed Mid-door section Split top drawers from file to 2 reg. updated color to white on desk, outlets,lights
12/10/24	Added 2nd outlet to the headboard Added Locks to the file drawers Added wood desk top (still need color)
12/12/24	Updated color on wood desktop (cherry on maple)



16" Bar Pulls
Nickel



6" Bar Pulls
Nickel

Info Page



It's like having your own shop!

123-0125
Work Order 1368

REVISIONS

	MM/DD/YY	REMARKS
1	11/21/24	Reduce the Upper bookcase to 23"h, remove the
2		right bookcase
3	11/29/24	Removed Inset BCs, added back right bookcase and
4		both are 13" wide (right has file drawers)
5	11/29/24	More revisions on page 2

A 02

A

123-0125
Work Order 1368

Size: Queen

Wood: Painted Maple

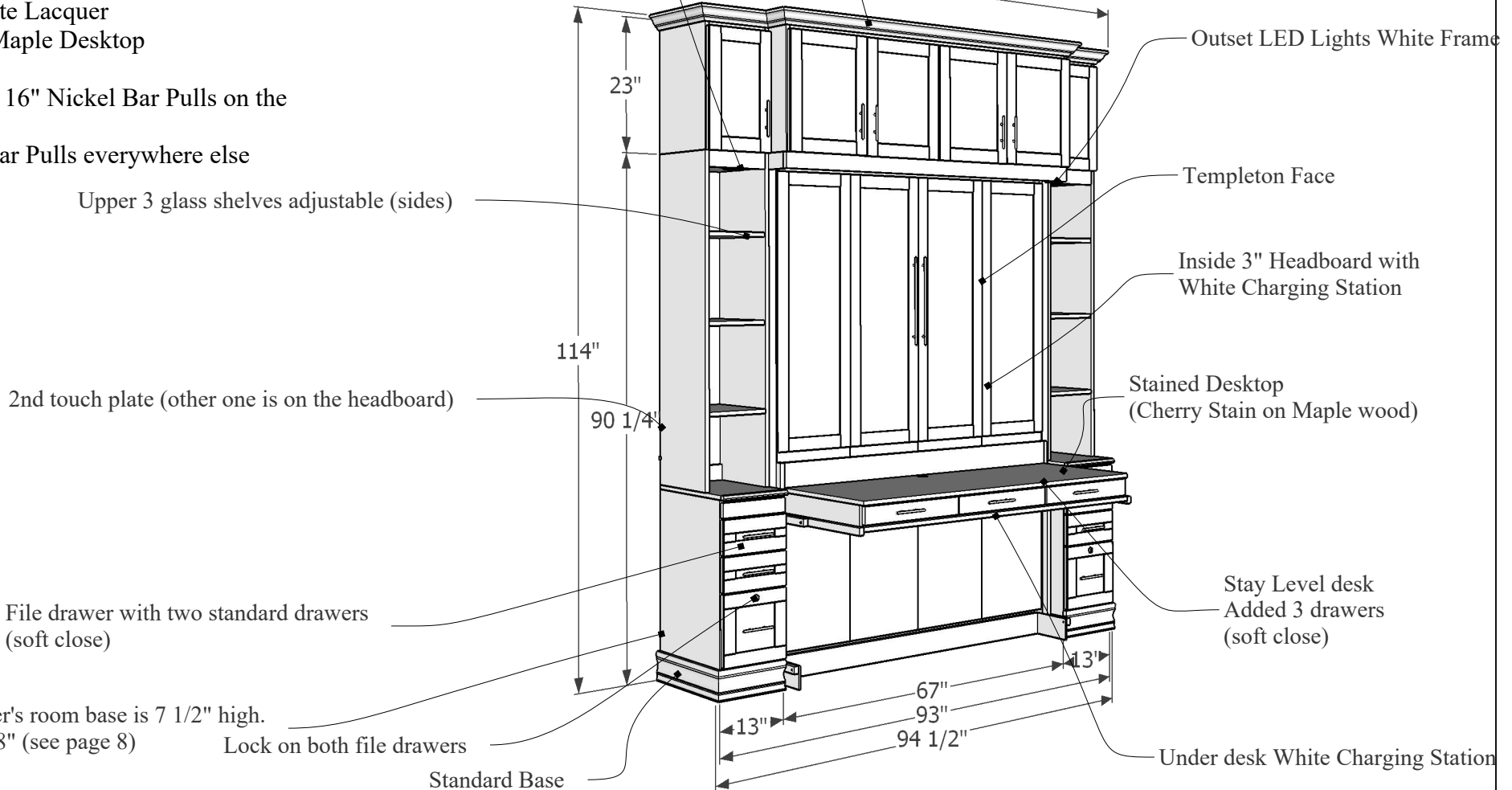
Color: White Lacquer
 Cherry on Maple Desktop

Hardware: 16" Nickel Bar Pulls on the face
 6" Nickel Bar Pulls everywhere else

Bookcase LED Lights White Frame
 (both sides)

23"h upper bookcases, 1 adjustable shelf (all soft close)

Customer has 98" This design is 93" wide, measured at the mid section. If the right side is away from the wall by 4" that will put the left side at 97" and 1" away from the window.



Upper 3 glass shelves adjustable (sides)

Outset LED Lights White Frame

Templeton Face

Inside 3" Headboard with White Charging Station

Stained Desktop (Cherry Stain on Maple wood)

Stay Level desk
 Added 3 drawers (soft close)

Under desk White Charging Station

2nd touch plate (other one is on the headboard)

File drawer with two standard drawers (soft close)

Customer's room base is 7 1/2" high.
 Cut out 8" (see page 8)

Lock on both file drawers

Standard Base

Main Drawing with Measurements



It's like having your own shop!

123-0125
 Work Order 1368

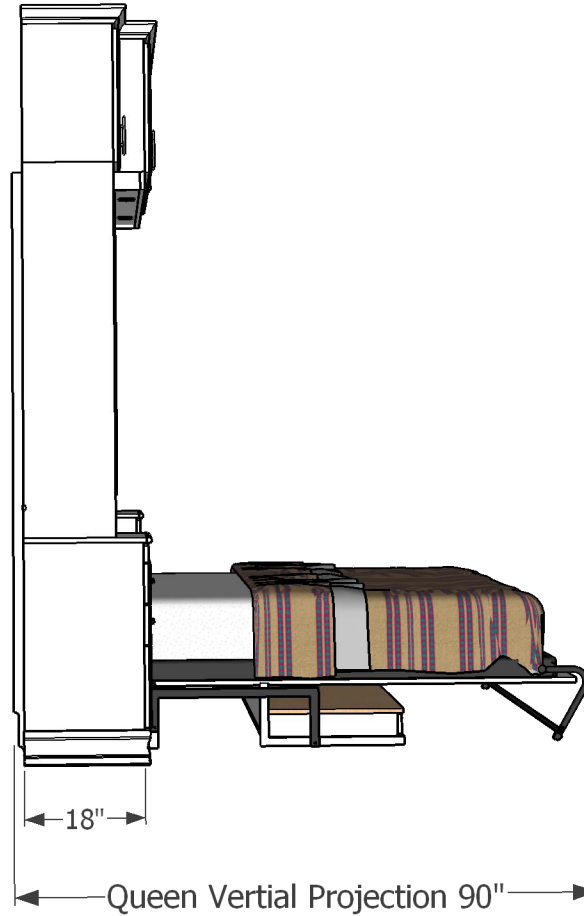
REVISIONS

	MM/DD/YY	REMARKS
1	11/21/24	Reduce the Upper bookcase to 23"h, remove the right bookcase
3	11/29/24	Removed Inset BCs, added back right bookcase and both are 13" wide (right has file drawers)
4		
5	11/29/24	More revisions on page 2

03

A

123-0125
Work Order 1368
 Queen
 White Lacquer
 Cherry on Maple Desktop



Drawing Projection



It's like having your own shop!

123-0125
 Work Order 1368

REVISIONS

	MM/DD/YY	REMARKS
1	11/21/24	Reduce the Upper bookcase to 23"h, remove the right bookcase
3	11/29/24	Removed Inset BCs, added back right bookcase and
4		both are 13" wide (right has file drawers)
5	11/29/24	More revisions on page 2

A 04

A



Face Closed



It's like having your own shop!

123-0125
Work Order 1368

REVISIONS

	MM/DD/YY	REMARKS
1	11/21/24	Reduce the Upper bookcase to 23"h, remove the right bookcase
2		
3	11/29/24	Removed Inset BCs, added back right bookcase and both are 13" wide (right has file drawers)
4		
5	11/29/24	More revisions on page 2

A 05

A



Face Open



It's like having your own shop!

123-0125
Work Order 1368

REVISIONS

	MM/DD/YY	REMARKS
1	11/21/24	Reduce the Upper bookcase to 23"h, remove the right bookcase
3	11/29/24	Removed Inset BCs, added back right bookcase and both are 13" wide (right has file drawers)
4		
5	11/29/24	More revisions on page 2

06

A



Drawers Left Side



It's like having your own shop!

123-0125
Work Order 1368

REVISIONS

	MM/DD/YY	REMARKS
1	11/21/24	Reduce the Upper bookcase to 23"h, remove the right bookcase
2		
3	11/29/24	Removed Inset BCs, added back right bookcase and both are 13" wide (right has file drawers)
4		
5	11/29/24	More revisions on page 2



Drawers Right side



It's like having your own shop!

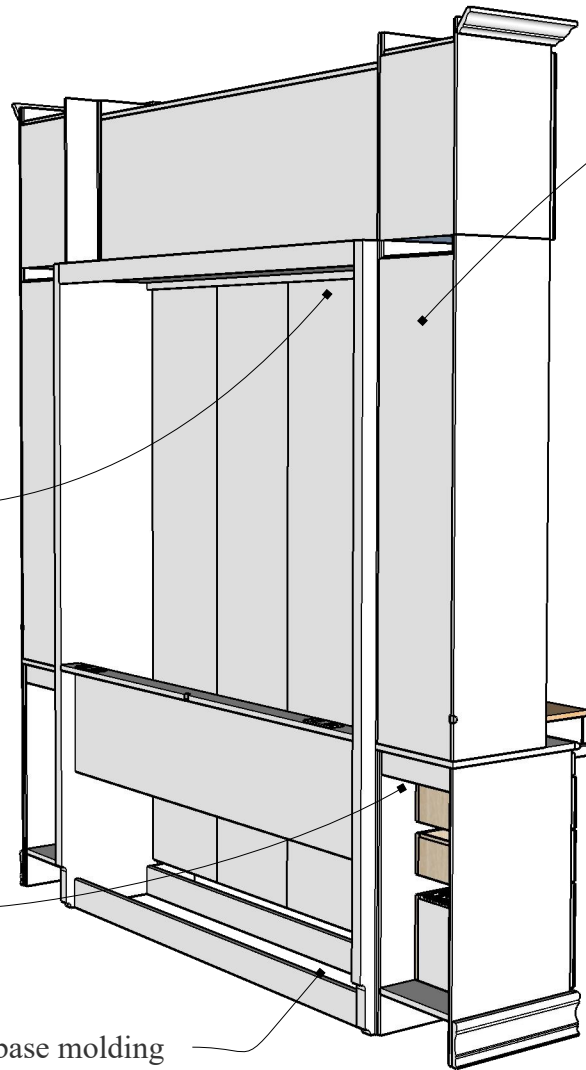
123-0125
Work Order 1368

REVISIONS

	MM/DD/YY	REMARKS
1	11/21/24	Reduce the Upper bookcase to 23"h, remove the
2		right bookcase
3	11/29/24	Removed Inset BCs, added back right bookcase and
4		both are 13" wide (right has file drawers)
5	11/29/24	More revisions on page 2

A 08

Base Molding Cutout



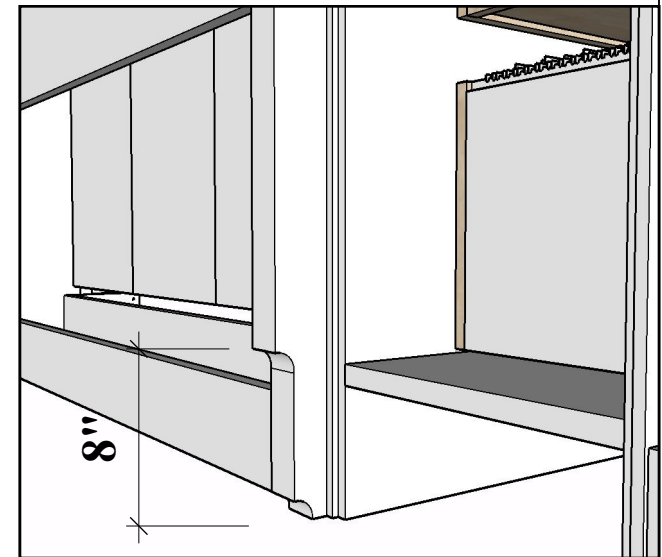
Bed will sit flush with back wall

Back left off drawer section to make running of cords easier.

8" high cutout for room's base molding

Bookcase is spaced a couple inches away from wall to allow for wiring.

Base cutout



Base Molding Cutout



It's like having your own shop!

123-0125
Work Order 1368

REVISIONS

	MM/DD/YY	REMARKS
1	11/21/24	Reduce the Upper bookcase to 23"h, remove the right bookcase
2		
3	11/29/24	Removed Inset BCs, added back right bookcase and both are 13" wide (right has file drawers)
4		
5	11/29/24	More revisions on page 2

09

A



Drink Trays



It's like having your own shop!

123-0125
Work Order 1368

REVISIONS

	MM/DD/YY	REMARKS
1	11/21/24	Reduce the Upper bookcase to 23"h, remove the right bookcase
3	11/29/24	Removed Inset BCs, added back right bookcase and both are 13" wide (right has file drawers)
4		
5	11/29/24	More revisions on page 2



Bookcase LED Lights White Frame

Outlet LED Lights White Frame

Lights

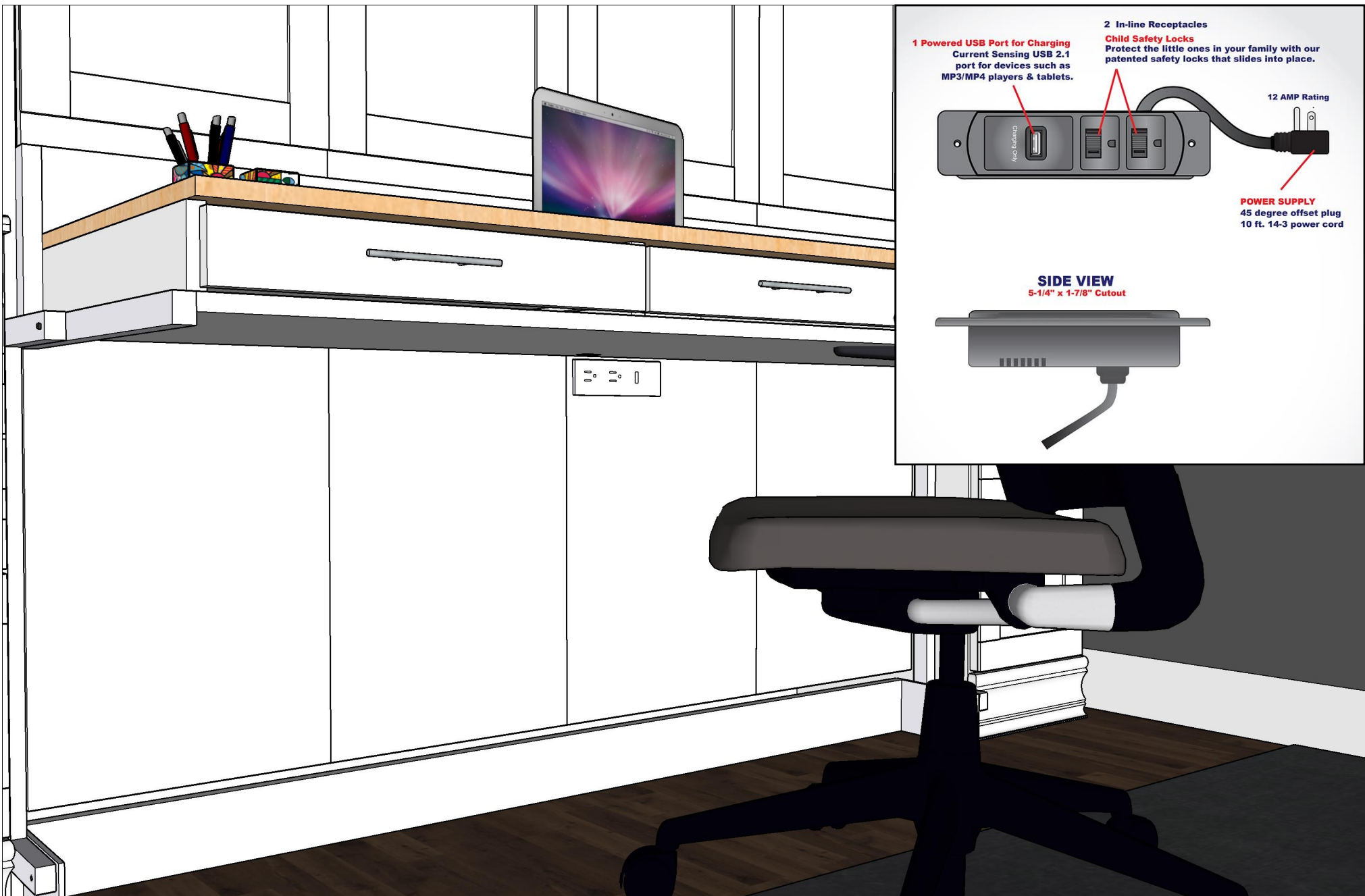


It's like having your own shop!

123-0125
Work Order 1368

REVISIONS

	MM/DD/YY	REMARKS
1	11/21/24	Reduce the Upper bookcase to 23"h, remove the right bookcase
3	11/29/24	Removed Inset BCs, added back right bookcase and both are 13" wide (right has file drawers)
4		
5	11/29/24	More revisions on page 2



Under Desk Charging Station



It's like having your own shop!

123-0125
Work Order 1368

REVISIONS

	MM/DD/YY	REMARKS
1	11/21/24	Reduce the Upper bookcase to 23"h, remove the right bookcase
2		
3	11/29/24	Removed Inset BCs, added back right bookcase and both are 13" wide (right has file drawers)
4		
5	11/29/24	More revisions on page 2



Bookcase Open



It's like having your own shop!

123-0125
Work Order 1368

REVISIONS

	MM/DD/YY	REMARKS
1	11/21/24	Reduce the Upper bookcase to 23"h, remove the right bookcase
2		
3	11/29/24	Removed Inset BCs, added back right bookcase and both are 13" wide (right has file drawers)
4		
5	11/29/24	More revisions on page 2



Small Mountable Power Strip with USB C

1AC Outlet
(125V 12A)

PD USB C
(18W 5V 3A /9V 2A/ 12V 1.5A)

1* USB A
(QC 3.0, 5V 3A /9V 2A/ 12V 1.5A)

Headboard



It's like having your own shop!

123-0125
Work Order 1368

REVISIONS

	MM/DD/YY	REMARKS
1	11/21/24	Reduce the Upper bookcase to 23"h, remove the right bookcase
2		
3	11/29/24	Removed Inset BCs, added back right bookcase and both are 13" wide (right has file drawers)
4		
5	11/29/24	More revisions on page 2



Hole in bookcase



It's like having your own shop!

123-0125
Work Order 1368

REVISIONS

	MM/DD/YY	REMARKS
1	11/21/24	Reduce the Upper bookcase to 23"h, remove the right bookcase
3	11/29/24	Removed Inset BCs, added back right bookcase and both are 13" wide (right has file drawers)
4		
5	11/29/24	More revisions on page 2

Extras: Bookcase Charging Station

These outlets are normally placed at the back of the shelf above the drink tray pullout. They come with a 110V outlet. Also charge/power your phone, tablet or MP3 player a standard USB and now a fast charging USB-C (available in white or black)
 Cost \$100 ea.

More on the outlets: www.wwbeds.com/charging



Extras: Bookcase Charging Station



It's like having your own shop!

123-0125
 Work Order 1368

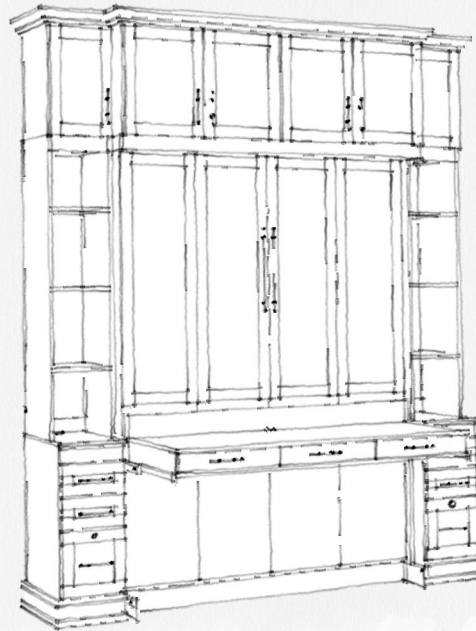
REVISIONS

	MM/DD/YY	REMARKS
1	11/21/24	Reduce the Upper bookcase to 23"h, remove the right bookcase
2		
3	11/29/24	Removed Inset BCs, added back right bookcase and both are 13" wide (right has file drawers)
4		
5	11/29/24	More revisions on page 2

More Extras

More extras can be added to your murphy bed design. Examples of those can be found at:

www.wwbeds.com/murphy-bed-extras



More Extras



It's like having your own shop!

123-0125
Work Order 1368

REVISIONS

	MM/DD/YY	REMARKS
1	11/21/24	Reduce the Upper bookcase to 23" h, remove the right bookcase
2		
3	11/29/24	Removed Inset BCs, added back right bookcase and
4		both are 13" wide (right has file drawers)
5	11/29/24	More revisions on page 2