

123-0426
Work Order 1600



It's like having your own shop!

Drawn By: Chris Davis

Last Modified: March 9, 2026

123-0426

Work Order 1600

Wood: Maple

Color: Two-Tone White main, Dark Walnut Accent

Size: Queen

Hardware: 6" Nickel Bar Pulls



6" Bar Pulls
Nickel

Info Page



It's like having your own shop!

123-0426
Work Order 1600

REVISIONS

	MM/DD/YY	REMARKS
1	3/5/26	Switched Shredder and file drawers, drew in
2		monitors, added 1 1/2" hole under desk
3	3/9/26	Changed the 2nd touch switch
4	--/--/--	...
5	--/--/--	...

A 02

A

123-0426

Work Order 1600

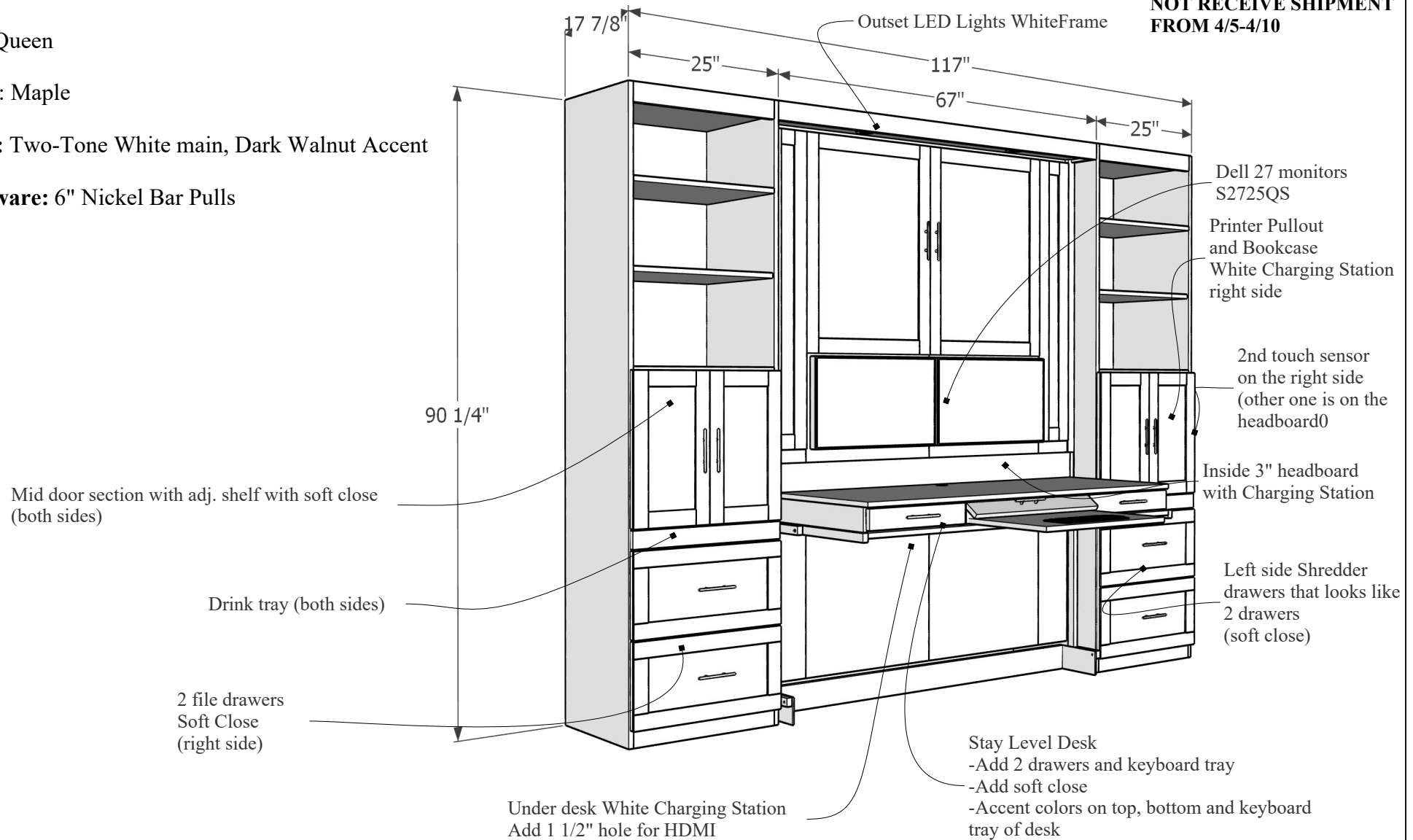
Size: Queen

Wood: Maple

Color: Two-Tone White main, Dark Walnut Accent

Hardware: 6" Nickel Bar Pulls

NOTE: CUSTOER CAN NOT RECEIVE SHIPMENT FROM 4/5-4/10



Main Drawing with Measurements



It's like having your own shop!

123-0426
Work Order 1600

REVISIONS

	MM/DD/YY	REMARKS
1	3/5/26	Switched Shredder and file drawers, drew in monitors, added 1 1/2" hole under desk
2		
3	3/9/26	Changed the 2nd touch switch
4	--/--/--	...
5	--/--/--	...

03

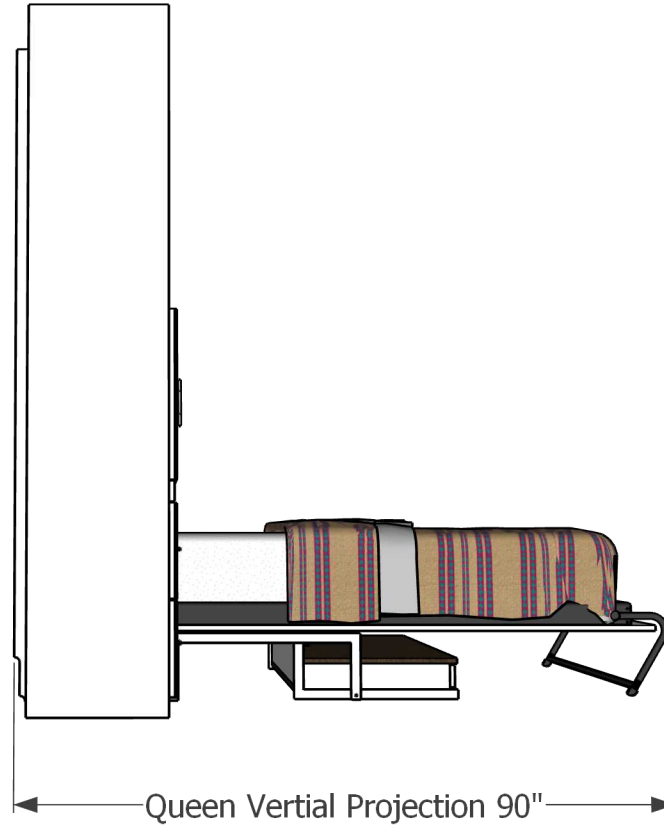
A

123-0426

Work Order 1600

Queen

Two-Tone White main, Dark Walnut Accent



Drawing Projection



It's like having your own shop!

123-0426
Work Order 1600

REVISIONS

	MM/DD/YY	REMARKS
1	3/5/26	Switched Shredder and file drawers, drew in
2		monitors, added 1 1/2" hole under desk
3	3/9/26	Changed the 2nd touch switch
4	--/--/--	...
5	--/--/--	...

A 04

A



Face Closed



It's like having your own shop!

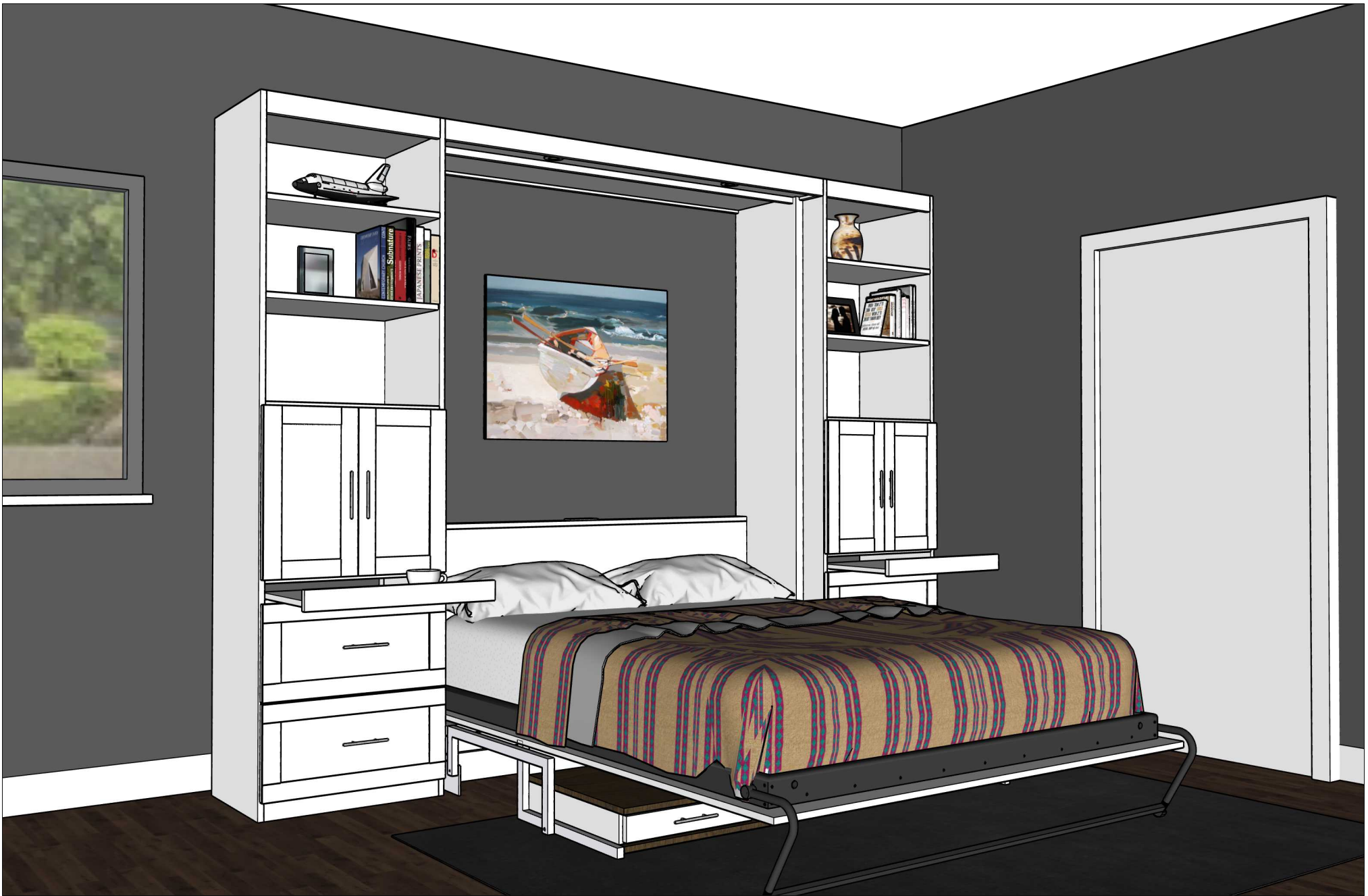
123-0426
Work Order 1600

REVISIONS

	MM/DD/YY	REMARKS
1	3/5/26	Switched Shredder and file drawers, drew in monitors, added 1 1/2" hole under desk
3	3/9/26	Changed the 2nd touch switch
4	--/--/--	...
5	--/--/--	...

05

A



Face Open



It's like having your own shop!

123-0426
Work Order 1600

REVISIONS

	MM/DD/YY	REMARKS
1	3/5/26	Switched Shredder and file drawers, drew in monitors, added 1 1/2" hole under desk
3	3/9/26	Changed the 2nd touch switch
4	--/--/--	...
5	--/--/--	...

06

A



Desk



It's like having your own shop!

123-0426
Work Order 1600

REVISIONS

	MM/DD/YY	REMARKS
1	3/5/26	Switched Shredder and file drawers, drew in monitors, added 1 1/2" hole under desk
3	3/9/26	Changed the 2nd touch switch
4	--/--/--	...
5	--/--/--	...

07

A



Desk Drawers



It's like having your own shop!

123-0426
Work Order 1600

REVISIONS

	MM/DD/YY	REMARKS
1	3/5/26	Switched Shredder and file drawers, drew in monitors, added 1 1/2" hole under desk
3	3/9/26	Changed the 2nd touch switch
4	--/--/--	...
5	--/--/--	...



File Drawers



It's like having your own shop!

123-0426
Work Order 1600

REVISIONS

	MM/DD/YY	REMARKS
1	3/5/26	Switched Shredder and file drawers, drew in monitors, added 1 1/2" hole under desk
3	3/9/26	Changed the 2nd touch switch
4	--/--/--	...
5	--/--/--	...

09

A



Shredder Drawer



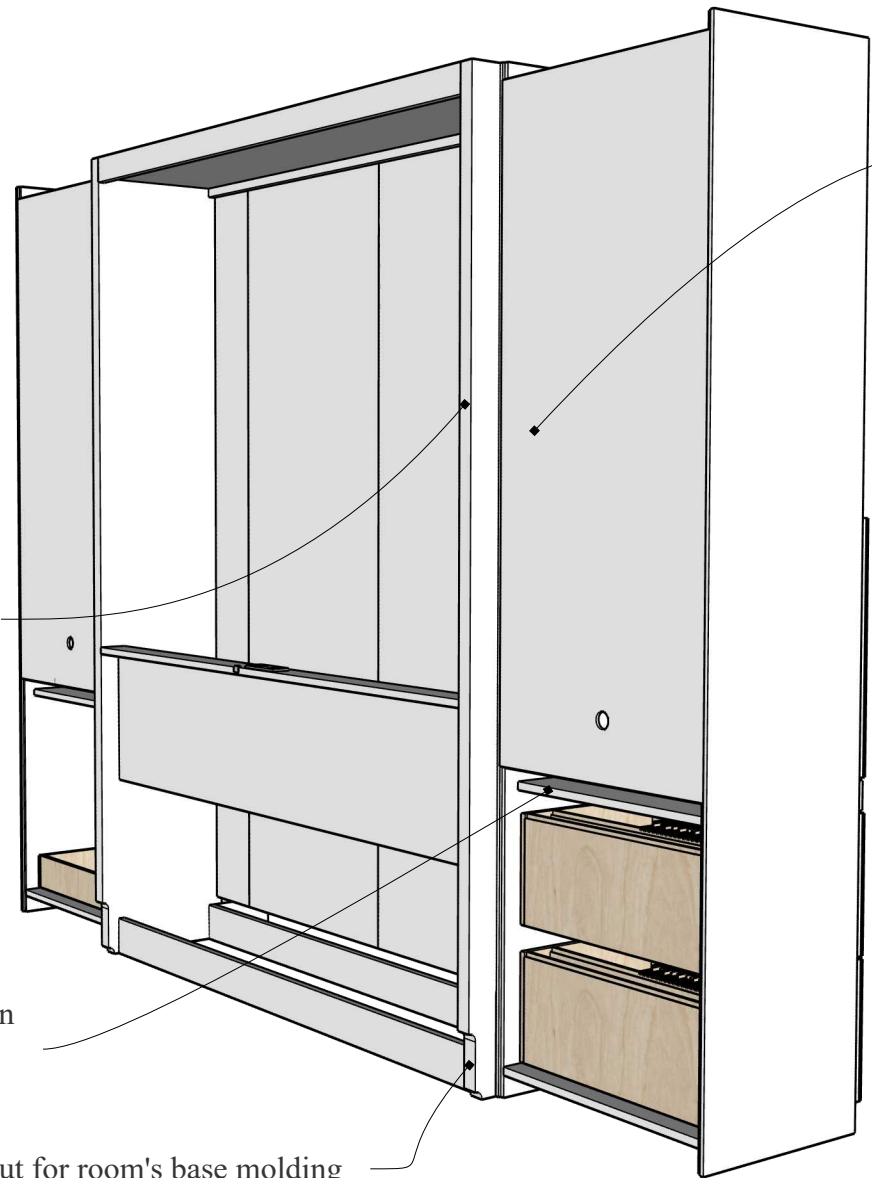
It's like having your own shop!

123-0426
Work Order 1600

REVISIONS

	MM/DD/YY	REMARKS
1	3/5/26	Switched Shredder and file drawers, drew in monitors, added 1 1/2" hole under desk
3	3/9/26	Changed the 2nd touch switch
4	--/--/--	...
5	--/--/--	...

Base Molding Cutout



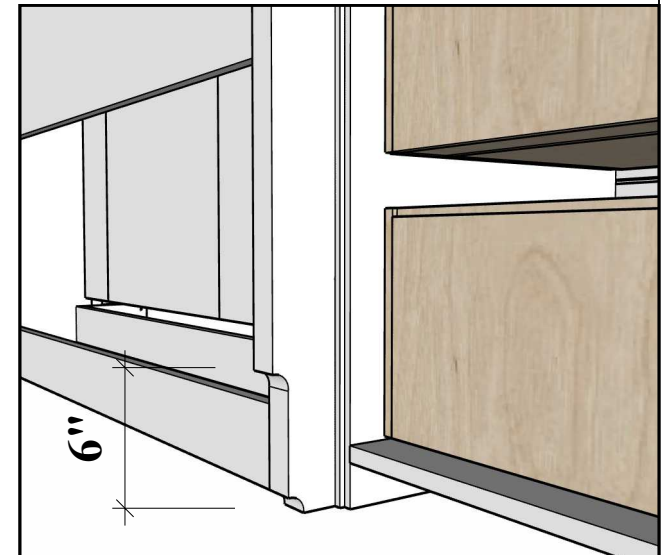
Bed will sit flush with back wall

Back left off drawer section to make running of cords easier.

6" high cutout for room's base molding

Bookcase is spaced a couple inches away from wall to allow for wiring.

Base cutout



Base Molding Cutout



It's like having your own shop!

123-0426
Work Order 1600

REVISIONS

	MM/DD/YY	REMARKS
1	3/5/26	Switched Shredder and file drawers, drew in monitors, added 1 1/2" hole under desk
3	3/9/26	Changed the 2nd touch switch
4	--/--/--	...
5	--/--/--	...



Drink Trays



It's like having your own shop!

123-0426
Work Order 1600

REVISIONS

	MM/DD/YY	REMARKS
1	3/5/26	Switched Shredder and file drawers, drew in monitors, added 1 1/2" hole under desk
3	3/9/26	Changed the 2nd touch switch
4	--/--/--	...
5	--/--/--	...



Outset LED Lights WhiteFrame

Lights



It's like having your own shop!

123-0426
Work Order 1600

REVISIONS

	MM/DD/YY	REMARKS
1	3/5/26	Switched Shredder and file drawers, drew in monitors, added 1 1/2" hole under desk
3	3/9/26	Changed the 2nd touch switch
4	--/--/--	...
5	--/--/--	...



Added 1 1/2" hold for HDMI. (Cord with 10" slack can used up through the desk and be okay when opening the bed.)



Under Desk Charging Station



It's like having your own shop!

123-0426
Work Order 1600

REVISIONS

	MM/DD/YY	REMARKS
1	3/5/26	Switched Shredder and file drawers, drew in monitors, added 1 1/2" hole under desk
3	3/9/26	Changed the 2nd touch switch
4	--/--/--	...
5	--/--/--	...



Bookcase Open



It's like having your own shop!

123-0426
Work Order 1600

REVISIONS

	MM/DD/YY	REMARKS
1	3/5/26	Switched Shredder and file drawers, drew in monitors, added 1 1/2" hole under desk
3	3/9/26	Changed the 2nd touch switch
4	--/--/--	...
5	--/--/--	...



Bookcase Charging Station



It's like having your own shop!

123-0426
Work Order 1600

REVISIONS

	MM/DD/YY	REMARKS
1	3/5/26	Switched Shredder and file drawers, drew in monitors, added 1 1/2" hole under desk
3	3/9/26	Changed the 2nd touch switch
4	--/--/--	...
5	--/--/--	...



Light touch plate

Headboard



It's like having your own shop!

123-0426
Work Order 1600

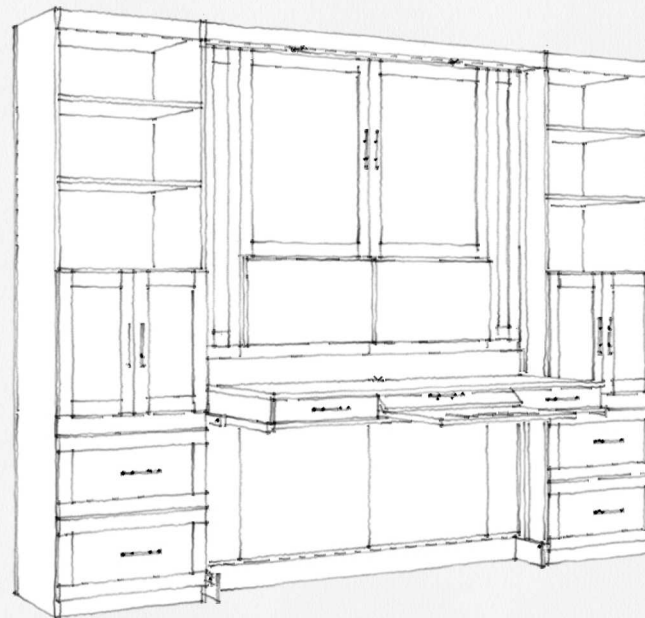
REVISIONS

	MM/DD/YY	REMARKS
1	3/5/26	Switched Shredder and file drawers, drew in monitors, added 1 1/2" hole under desk
3	3/9/26	Changed the 2nd touch switch
4	--/--/--	...
5	--/--/--	...

More Extras

More extras can be added to your murphy bed design. Examples of those can be found at:

www.wwbeds.com/murphy-bed-extras



More Extras



It's like having your own shop!

123-0426
Work Order 1600

REVISIONS

	MM/DD/YY	REMARKS
1	3/5/26	Switched Shredder and file drawers, drew in monitors, added 1 1/2" hole under desk
2		
3	3/9/26	Changed the 2nd touch switch
4	--/--/--	...
5	--/--/--	...